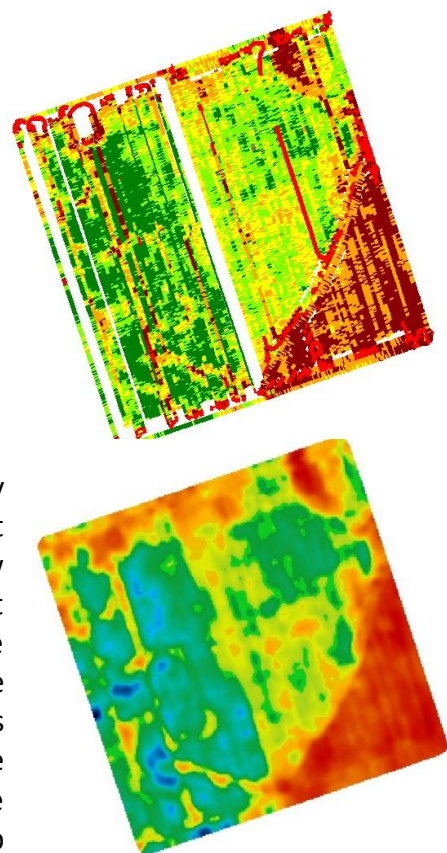


## MAP YOUR FIELDS INCREASE YOUR YIELDS

As the 2011 harvest season cranks into full gear we need to be thinking about the variability that exists in our fields and what we can do with it...

Here at **Agri Optics** we offer a comprehensive **Data Management Service** where we take your yield data, process it and provide it back to you in a useable format that can be viewed as well as turned into prescription maps for variable rate application to help you maximise your economic return from **every area of your field**.

Due to the stop start nature of yield mapping what we get as a yield map from our combine may be very patchy and not completely accurate (e.g. only picking up half a cutter width of crop in most combines would come through in the map showing a very low yielding area compared to the rest of the paddock, where in fact that is not the case) resulting in the need for processing the data to make it more spatially accurate, which can then be used to make management decisions (e.g. soil testing, base fertiliser etc). The maps on the left show what raw yield data map (top) looks like with a large amount of data processing needed (particularly where the combine stops and starts at the ends) compared to processed yield map (bottom) of the same yield data with all the anomalies removed.



YIELD MAPPING

### MAKING USEFUL YIELD MAPS – THE ESSENTIAL INFORMATION

1. **'Rubbish in equals rubbish out'** – you only get one opportunity to collect this data so 'do it once and do it right'
2. **Start the season with an empty data card** - save a copy of all previous data to your computer and then 'clean' the card
3. **Naming** – use the same naming for the same paddock each year as this makes finding your data easier at the end of the season
4. **Check the flow and moisture sensors** – if these are not working properly then everything that follows may be a waste of time
5. **Calibration** – at the start of harvesting each grain type, calibrate the flow sensor and moisture sensor.
6. **Operation setup** – make sure the cutter bar width is correct and the flow delay is as accurate as possible
7. **Card check & back-up** – confirm data is being logged by importing it into your mapping software or sending it to your Precision Ag specialist once you start for the season...not at the end of this season! Backup the data as a raw format throughout the harvest season also.
8. **Collect the data as accurately as possible** in the first place, then post-processing of the data to make it a useful resource is much simpler!

Service	Price		Description
	Base Minimum per field	Per Ha	
Yield Data	\$ 110.00	\$ 3.20	Base minimum is for fields up to and including 15 hectares. Per hectare charge is applicable above this

FOR ALL ENQUIRIES PLEASE CONTACT AGRI OPTICS ON: 03 3028753  
OR JEMMA.MACKENZIE@AGRIOPTICS.CO.NZ